

The Siemens logo is displayed in a bold, teal, sans-serif font.

Ingenuity for life

This building changes futures.

Pine Grove Middle School in East Syracuse, New York, is the perfect place to create the new learning environment that young minds need.

usa.siemens.com/K12

Look back on your middle school experience. What do you remember? Do you think of collaboration, creativity, imagination, and real-world skills development? Likely not. But in the future, graduates of Pine Grove Middle School will think back and remember exactly that.

Places to teach.

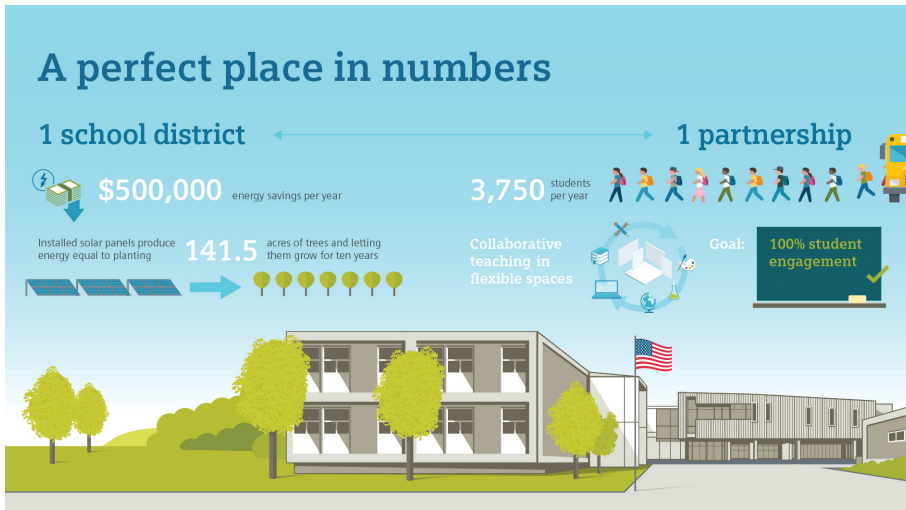
In East Syracuse, New York, Pine Grove Middle School is one of the seven schools in the East Minoa Syracuse Central School District (ESM). This district has had a long-standing partnership with Siemens Building Technologies that began with a simple project: design and implement much-needed building system and energy efficiency improvements, and fund those improvements through the energy savings generated by the project.

That was in 2008—about the same time ESM Superintendent Dr. Donna DeSiato and the educators at Pine Grove began to fully grasp the dramatic changes our world has seen. A new world of employment and a new digital life require new skills, and new ways of interacting with the world around us.

“For far too long, the education of our youth has been siloed and separated as you become educated from pre-K through grade 12, and then you go and interact with the rest of the world. Children are born into this world and need to be interacting with it while they’re being educated, in a safe and learning-conducive model. That’s what we want: a safe and innovative, learning-conducive model that ultimately respects that the learners were born into the 21st century, rather than continuing to attempt to educate them with, at best, an outdated 20th century model,” explains Dr. DeSiato. Similarly, Pine Grove’s passionate, dedicated team of educators understand the power of teaching, the influence of the learning environment, and the potential of their students.

Meet one of those educators: Adrienne Turbeville, Content Literacy Support Teacher. After twelve years of teaching, Ms. Turbeville continues to look for ways to engage students in their own education, helping them develop the skills they need to succeed both personally and professionally.





In fact, she has made this her own personal mission. “The world has changed,” she explains. “And education needed to change, too. We changed how the students learn. We changed what they learn. That meant changing where they learn.”

And so Pine Grove changed its teaching methods. Less rote memory. More imagination. Less repetition. More collaboration. Less memorizing. More creativity. But they wanted to do more to create that perfect place to teach.

Pine Grove defines education as preparing students for the world that’s waiting for them, which requires an unrelenting focus on the future. ESM’s educators not only recognize that where students learn has an impact on how they learn, they also understand that the school environment affects teaching methods in and out of the classroom. The call for a new teaching environment became clear.

Places to learn.

The reality is that any state-funded educational system must account for every dollar, and with the 2008 energy-efficiency project with Siemens well underway, generating savings for ESM, they were able to invest those savings back into Pine Grove Middle School, and completely renovate and redesign the teaching and learning environment. Here’s how:

Siemens and ESM leaders together took learning tours to STREAM (Science Technology, Research, Engineering, Arts, and Math) model schools to determine the best possible ways to support ESM’s

vision for a highly-engaging, student-centered environment. As Dr. DeSiato describes, “We knew that we were providing instruction in a digital age and in a global economy, and we needed to design the building to support the learning model that was focused on problem solving, collaboration, critical thinking, creativity, and innovation.” A public-private partnership, symposia, and community input contributed to the new building design. Whereas the building space once dictated the teaching methods, the new design meant that the teaching methods would redefine the space.

The new Pine Grove Middle School opened in the Fall of 2016, and ultimately, the school building has been transformed into an educational space, and not simply a group of classrooms. To be in the right mindset, students need to find themselves in the right conditions. Building technologies from Siemens make the right conditions possible, even in upstate New York, an area known for its sweltering summers and powerful blizzards. Proper temperature control is absolutely critical at all ESM schools, ensuring students are comfortable, focused, and in a perfect state to learn. Additionally, heating and air conditioning costs are among the largest items on any building’s operating budget. But with Siemens support, Pine Grove and all ESM schools can guarantee the right conditions for students to learn because the buildings rely on energy-efficient systems and technologies.

Today, attendance is up and so is student performance.

Places to grow.

Siemens provides building technologies that create the perfect place for Pine Grove students to concentrate, collaborate, think, create, and grow. Savings generated by the energy-efficient systems and improvements from Siemens have also enabled Pine Grove to invest continually in infrastructure, materials, and technology that advance ESM’s new teaching methods. Students are benefitting from working with the latest technology as well — 3D printers, laser tools, laptops, and more.

At Pine Grove Middle School, education is built around cultivating a mindset that will serve the students far beyond graduation. And the school building is built around delivering that education. Dr. DeSiato concludes: “Tell me the last time you went on a job interview and they asked you about your sixth-grade standardized test. But if you can talk about when you researched the nine different sources of energy in your eighth-grade classroom, worked in a team, and were the engineer for the group, that wakes people up to what’s possible.”

Siemens Industry, Inc.
 Building Technologies Division
 1000 Deerfield Parkway
 Buffalo Grove, IL 60089-4513
 Tel. 847-215-1000

© 2017 Siemens Industry, Inc.
 (12/2017, Part # 153-SBT-1001)