

Cerberus® PRO

FC922 / FC924

Programming Guide

SIEMENS



Fan Restart Configuration

Objective:

The Following steps are designed to activate a Fan Shutdown relay on any alarm, hold the relay active thru a panel reset, activate a status LED indicating FAN RESTART and pressing a PMI button to restart the fans



Programming:

- Add the relay module HTRI-R / 8704 or FDCIO422 to the hardware tree. Page #3
- Create the hold thru reset Fire Control. Page #5
- Configure a PMI button to re-start the fan. Page #9
- Configure a PMI Status LED to indicate Fan re-start . Page #10

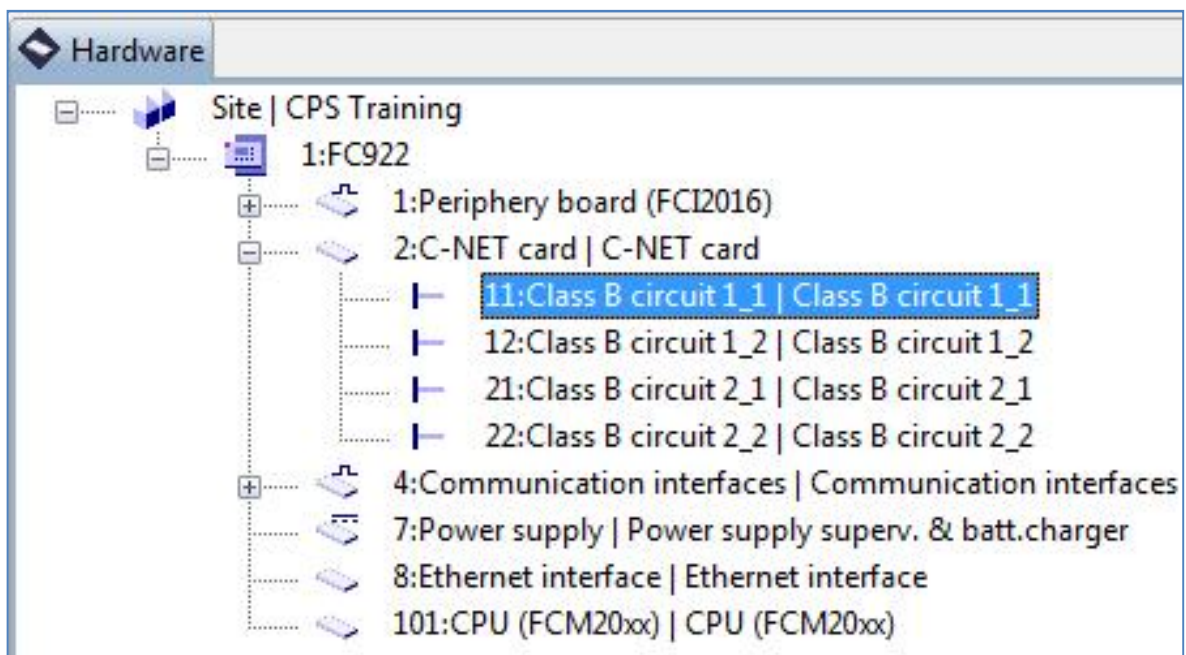
Adding the HTRI-R / 8704 / FDCIO422 Relay Module

To add the **HTRI-R/8704/FDCIO422** relay module, proceed as follows:
(Repeat the following steps for additional relays as needed)

1. Select the 'Hardware' task card.

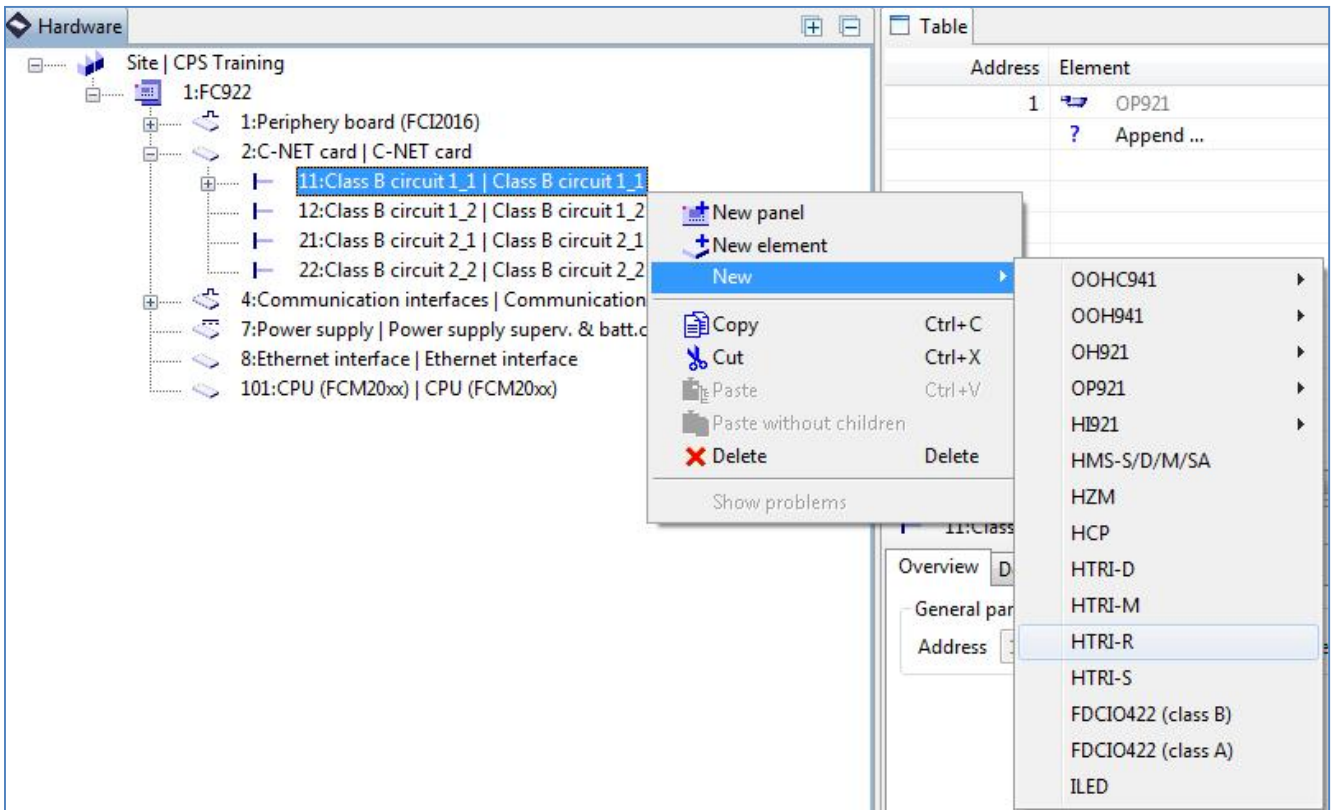


2. Open the 'C-NET card' element in the tree view.
3. Select the desired loop Circuit.

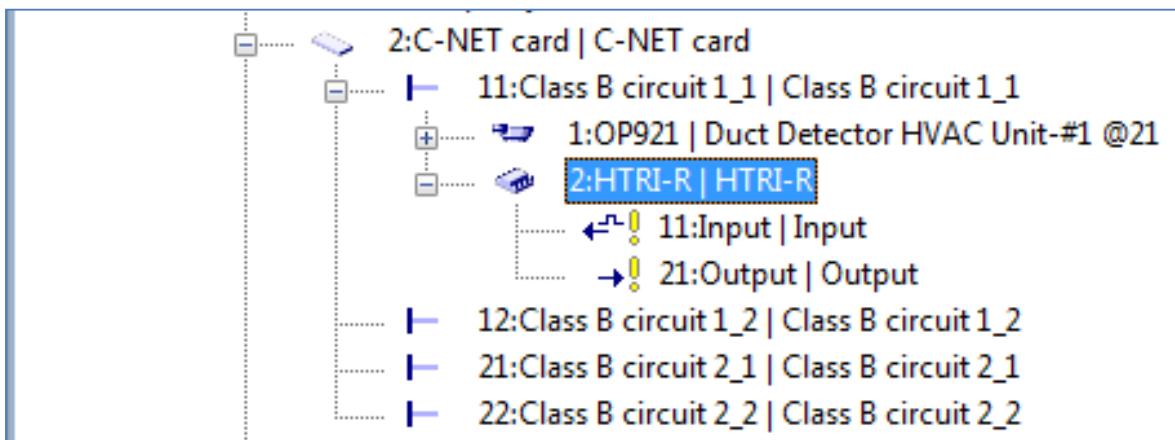


Adding the HTRI-R / 8704 / FDCIO422 Relay Module

4. Right-Click and select 'New' from the drop down menu.
5. Select the desire relay module 'HTRI-R / 8704/FDCIO422' from the drop down list.

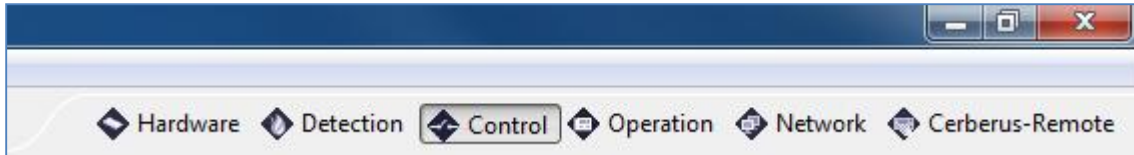


'HTRI-R / 8704/FDCIO422' added to the Loop circuit

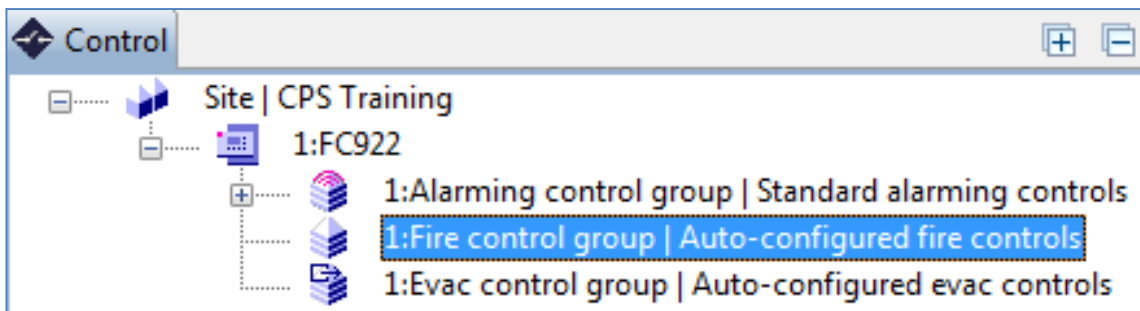


Creating the Fire Control to activate the output

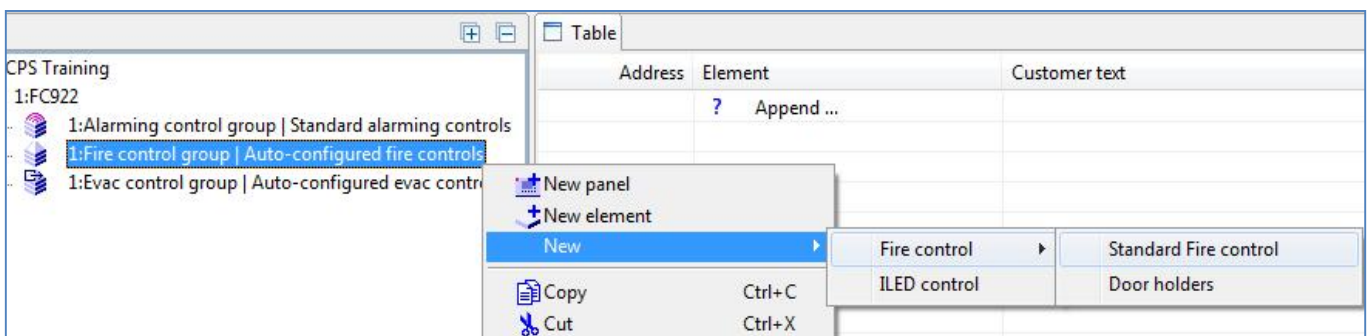
1. Select the 'Control' task card.



2. Open the 'Panel' element in the tree view.
3. Select the 'Fire control group' element in the tree view.



4. Right-Click and select 'New' -> 'Fire control' -> 'Standard Fire control' from the drop down list.

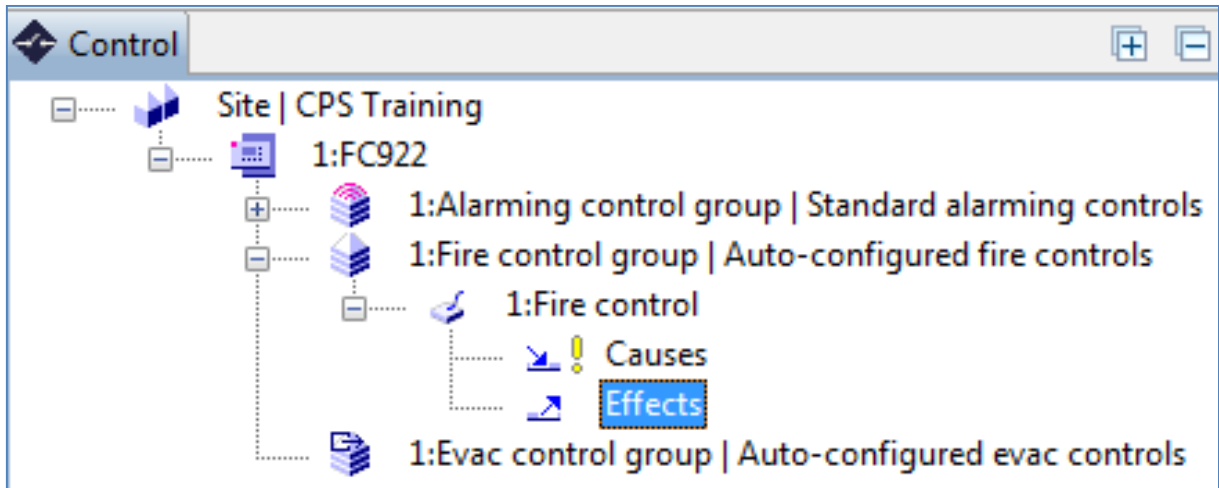


Fire Control Created

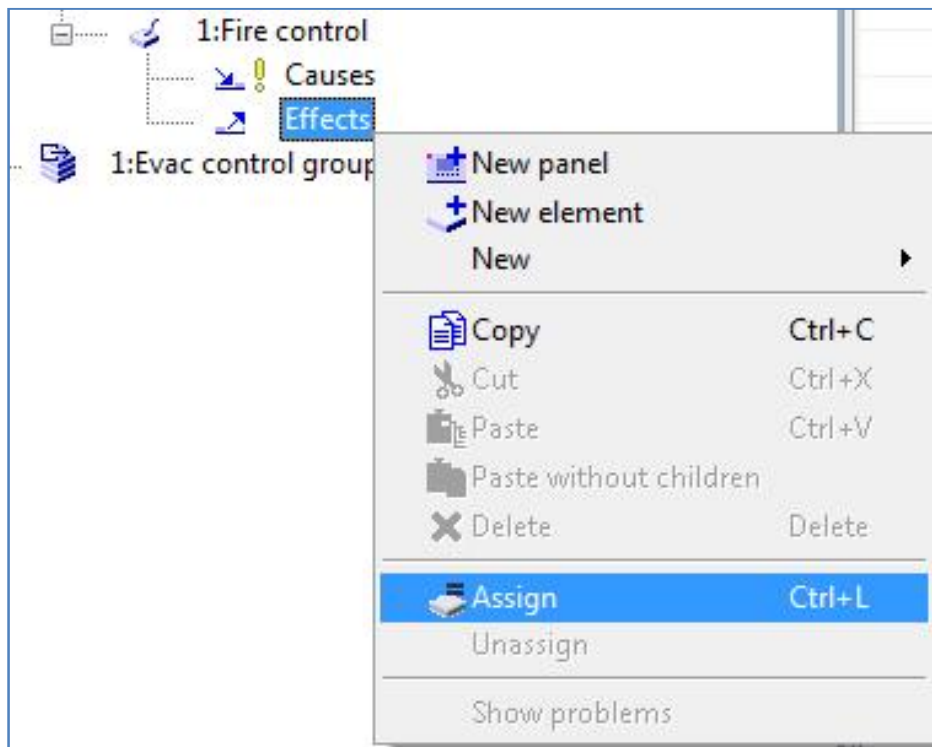
*Optional: enter 'Fan Shutdown' in the Customer text window

Creating the Fire Control to activate the output

5. Open the 'Fire control' element in the tree view.
6. Select the 'Effect' property of the fire control in the tree view.

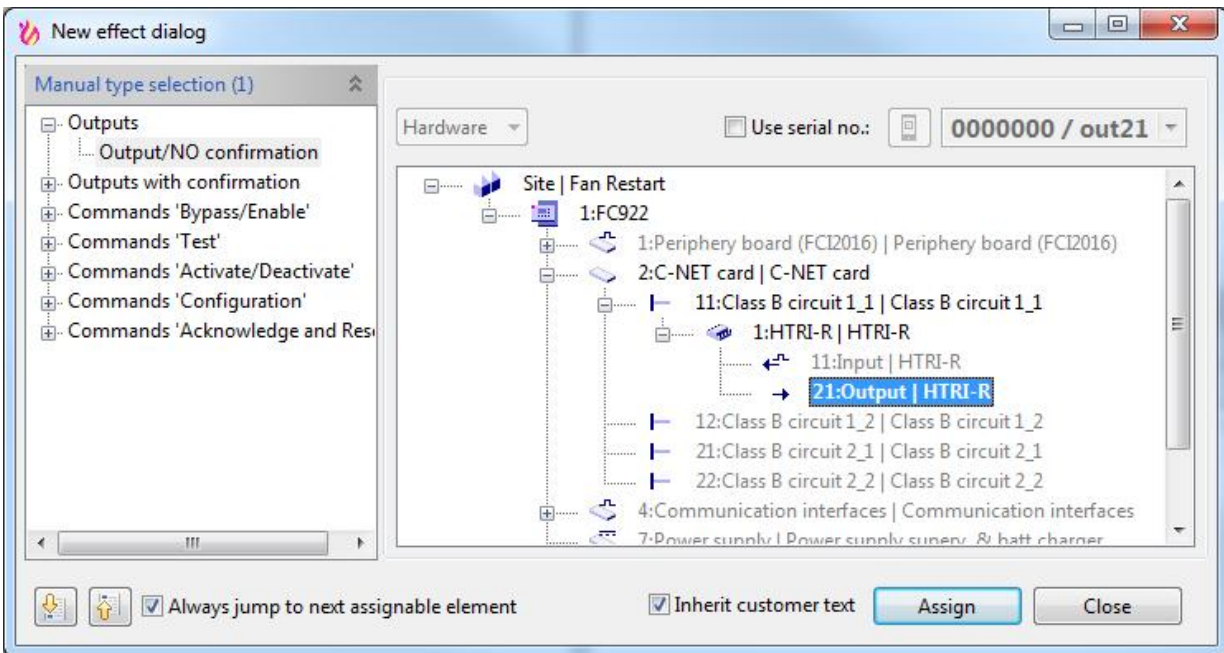


7. Right-Click and select 'Assign' from the drop down menu.

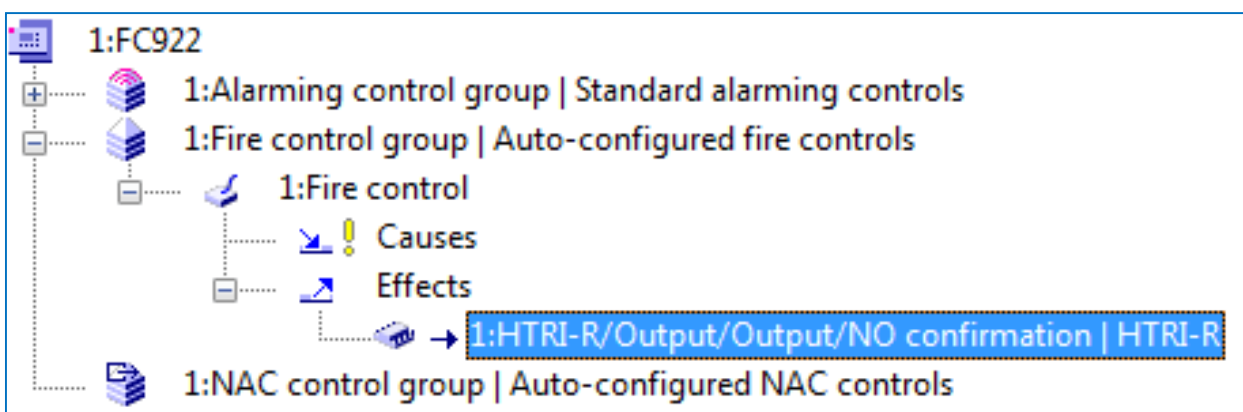


Creating the Fire Control to activate the output

8. Select the desired 'Output' and click 'Assign'.
9. Close the dialog window when it re-appears.

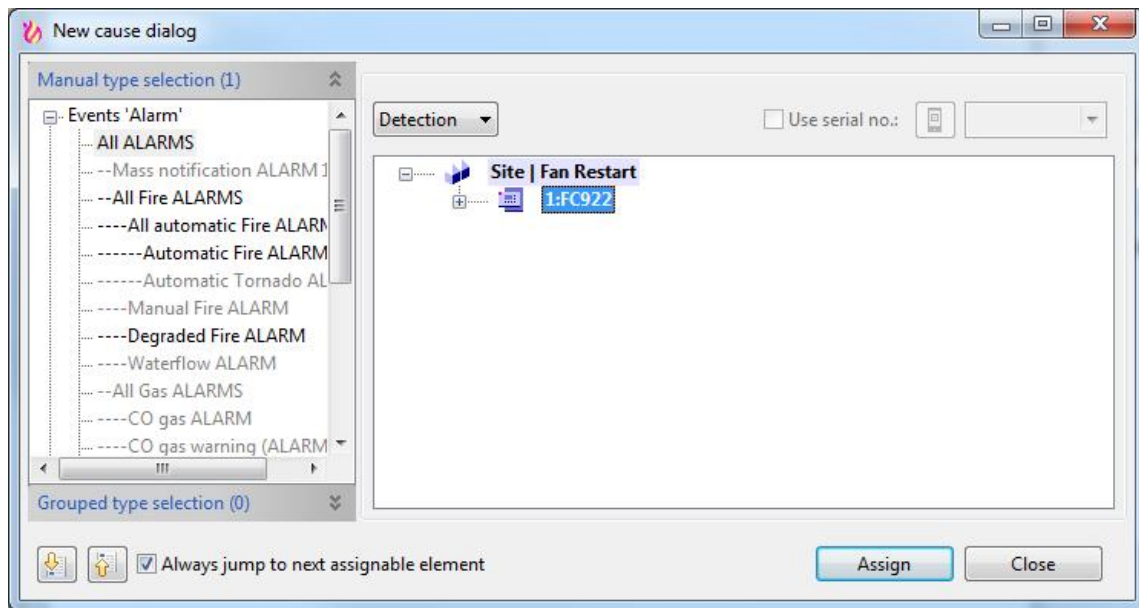


The Output is assigned to the effect of the fire control

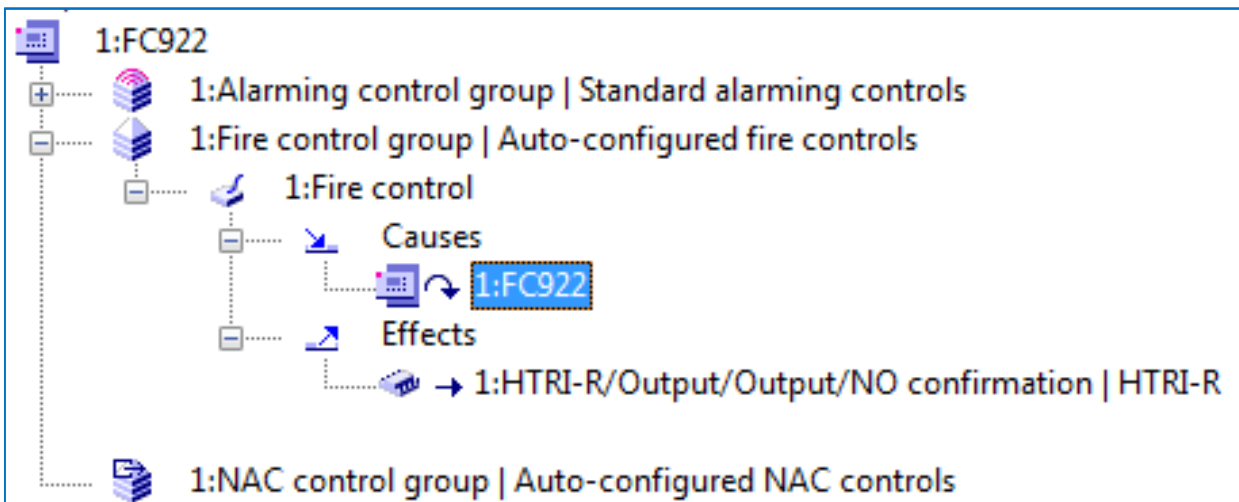


Configuring the Fire Control to activate on any ALARM

1. Select the 'Causes' property of the fire control in the tree view.
2. Right-Click and select 'Assign' from the drop down menu.
3. Select the ALL ALARM command from the Event alarm category
4. Select detection tree and navigate to the panel element and assign it

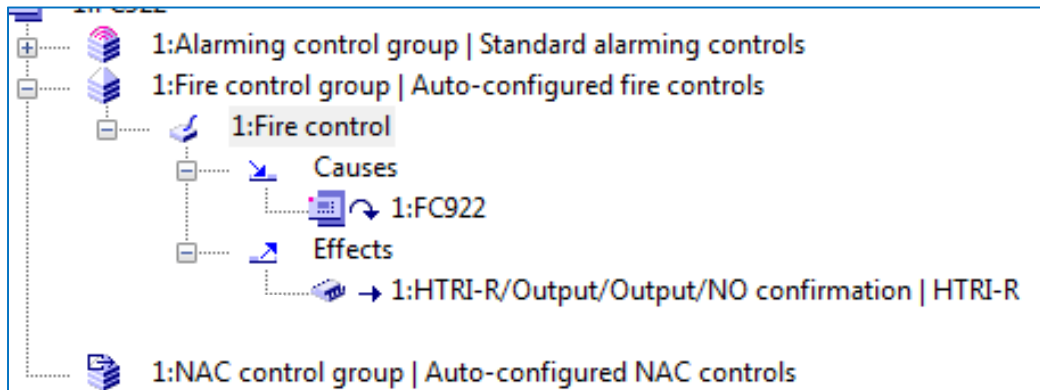


Any Alarm from the Panel has been assigned to the Cause of the Fire control, and will activate the relay in the Effects

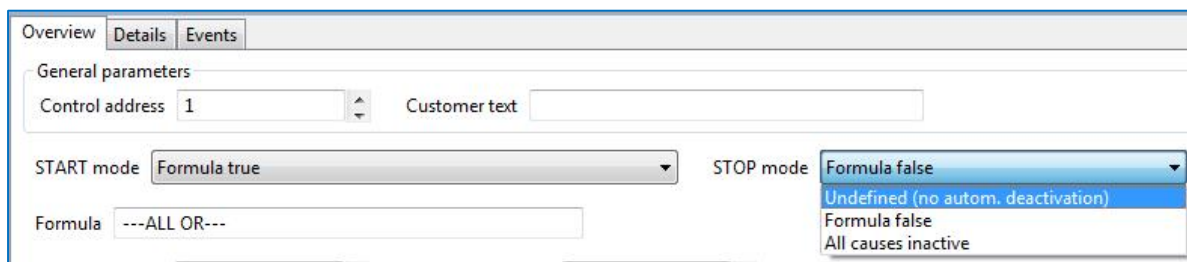


Configuring the Fire Control to HOLD THRU RESET

1. Select the 'Fire Control Element in the tree view.



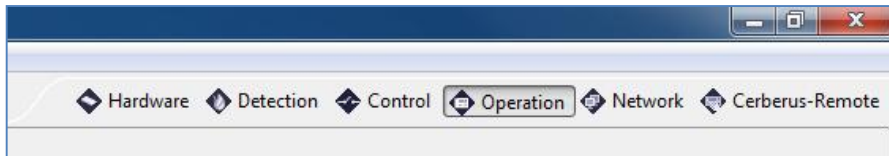
2. Select the Overview tab
3. Select '**Undefined (no autom. deactivation)**' for the STOP mode property – this will hold thru reset as it tells the formula not to stop once activated .



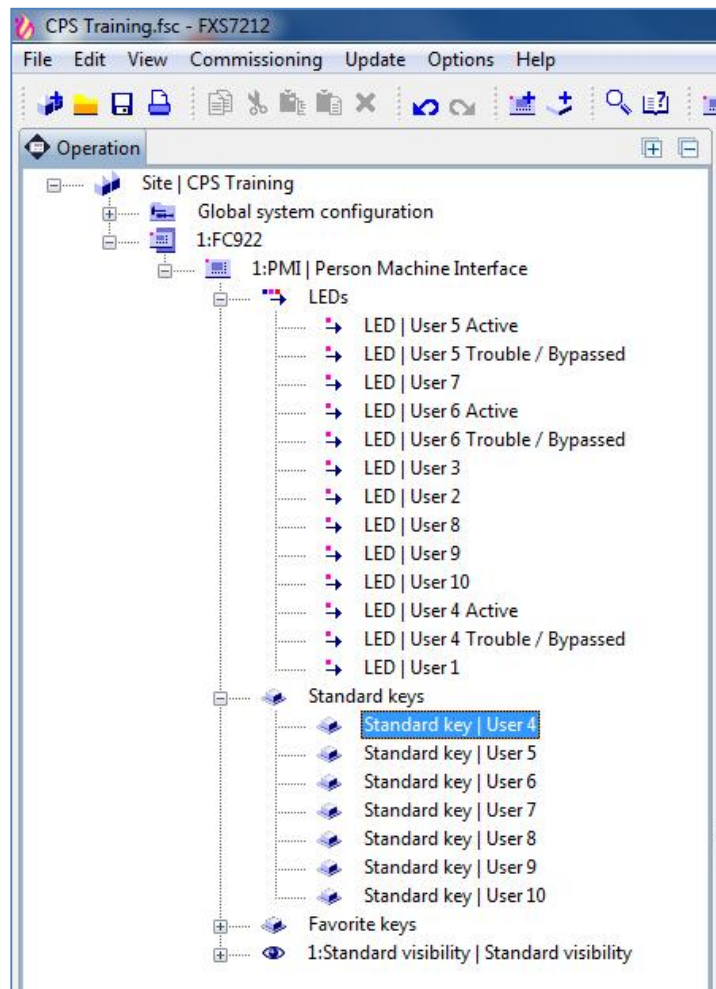
Assigning a PMI button (Standard Keys) to stop the fire control

To assign a standard key to stop the control function, proceed as follows:

1. Select the 'Operation' task card.

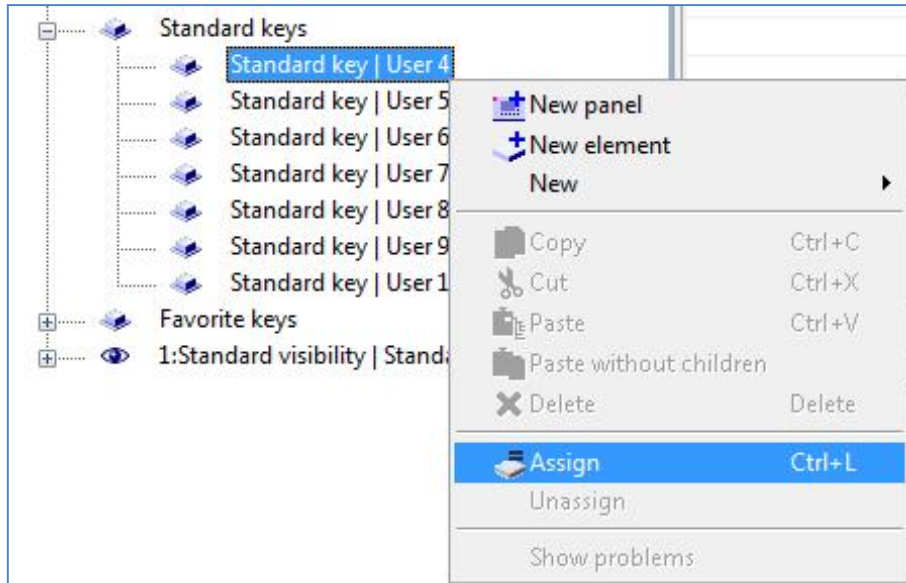


2. Open 'Panel' -> 'PMI' -> 'Standard Keys' in the tree view.
3. Highlight the appropriate 'Standard Key'

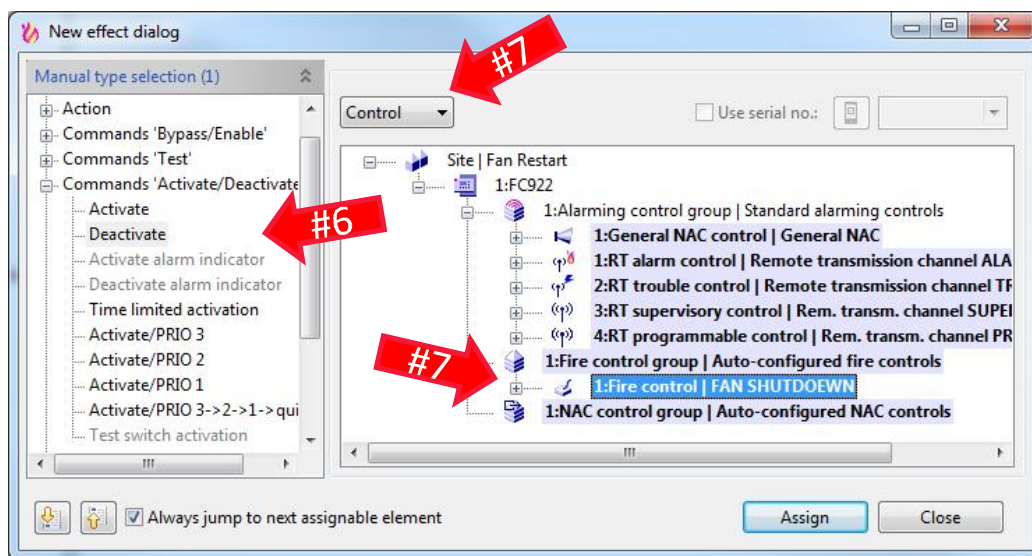


Assigning a PMI button (Standard Keys) to stop the fire control

4. Right-Click on the highlighted standard key
5. Select Assign from the drop down menu



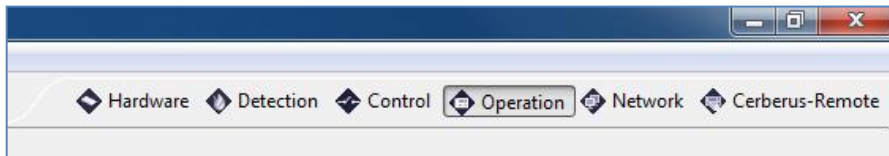
6. Select the **Deactivate** command from the **Activate/Deactivate** command category
7. Select Control and select the Fan shutdown Fire control – assign it



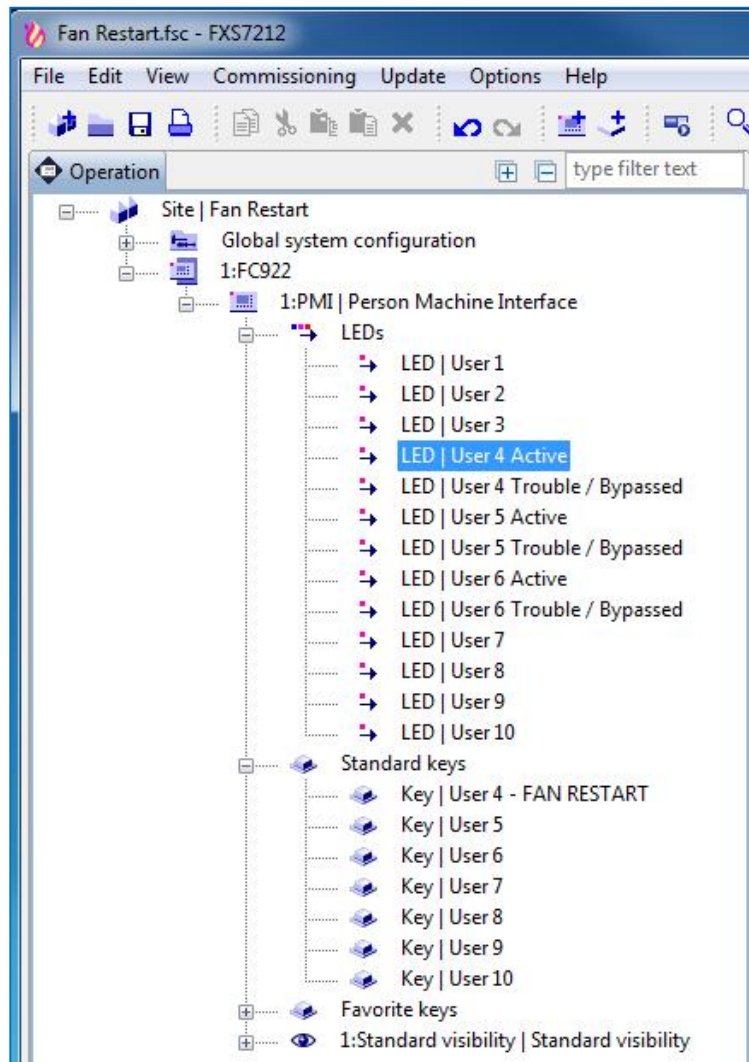
Assigning a PMI Status LED to indicate FAN RESTART

To assign the FAN RESTART status LED, proceed as follows:

1. Select the 'Operation' task card.

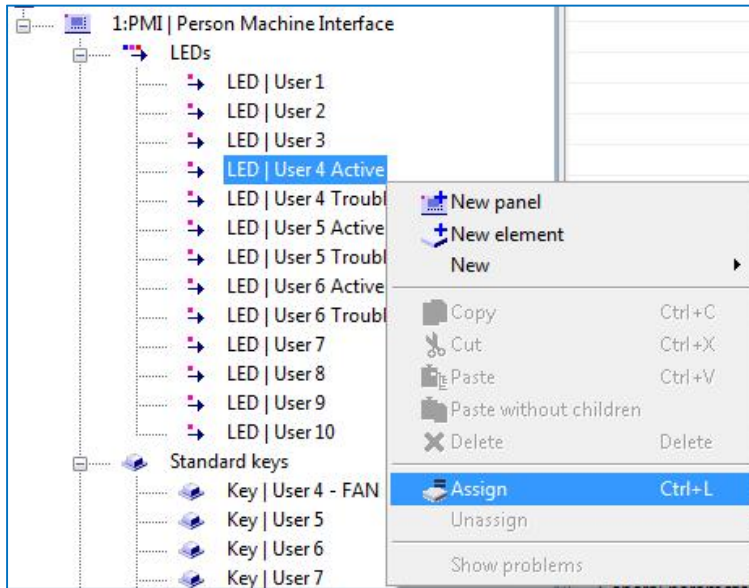


2. Open 'Panel' -> 'PMI' -> 'LEDs' in the tree view.
3. Select the required 'LED'
should be the LED next to the PMI Button for FAN RESTART

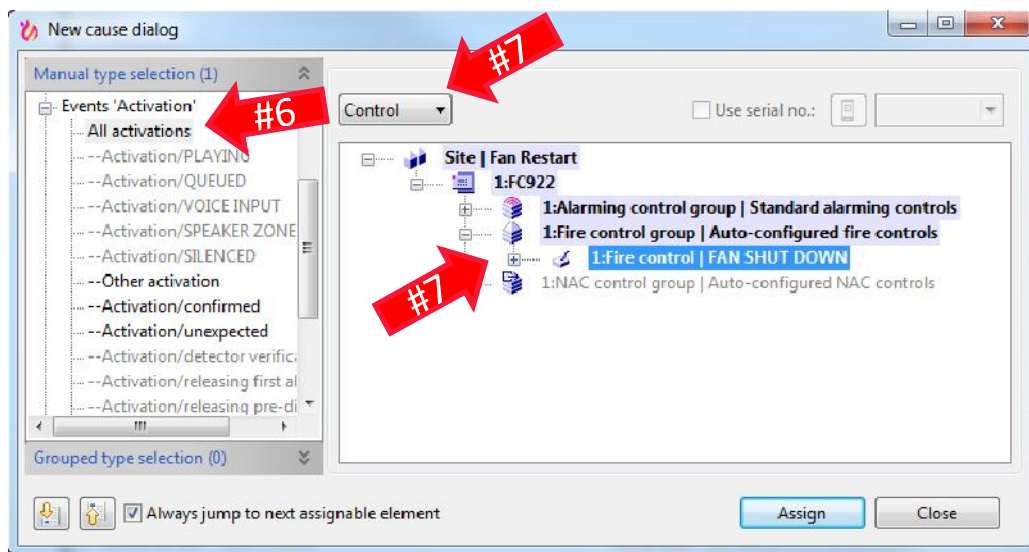


Assigning a PMI button (Standard Keys) to stop the fire control

4. Right-Click on the highlighted standard key
5. Select Assign from the drop down menu



6. Select the **All activation** command from the **Activate/Deactivate** command category
7. Select Control and select the Fan shutdown Fire control – assign it



You may now download the configuration to the panel and test the Fan Restart functionality...