

SIEMENS

Installation Instructions

Models MPS-12-220 and MPS-12-240 Power Supply Modules

OPERATION

The Model MPS-12-220 or MPS-12-240 from Siemens Industry, Inc. is a high current power supply that provides the MXL/MXLV System with primary 24 VDC power. It is rated at 12 amps and is unfiltered and unregulated. The MPS-12-220/240 provides only 6 amps when used with the MMB-1 or SMB-1. The MPS-12-220/240 supplies the MXL Control Panel or PSR-1 and its modules with the power required for normal operation. The module incorporates a 5 amp circuit-breaker on the primary input, a 15 amp fuse on the 24V output, and a built-in AC line filter for surge and noise suppression. The MPS-12-220/240 mounts in an MXL enclosure backbox.

INSTALLATION

Always remove power before installation.

The installation kit for the MPS-12-220/240 includes the following:

- Four #10 nuts
- Two #10 lockwashers
- Two #10 flat washers
- Two ¼" nuts
- One 14 gauge green ground strap

The MPS-12-220 or MPS-12-240, depending on the unit ordered, is designed to operate from either a 220 or 240 VAC, 50 or 60 Hz power source. Use a separate or dedicated circuitbreaker. Wire in accordance with local codes and Article 760 of the NEC, NFPA 70, latest edition.

Run the earth ground from a suitable source to the MPS-12-220/240. Check local requirements. **Conduit is not an acceptable conductor.**

1. **Make sure that the dedicated circuitbreaker** for the MPS-12-220/240 is turned off at the source.

2. Place the mounting bracket for the MPS-12-220/240 over the two studs provided in the backbox. (Refer to Figure 1.)
3. Secure the MPS-12-220/240 to the backbox by slipping the flat washers, then the lockwashers, and finally the nuts over the two studs. Tighten them securely.
4. Connect the source to the MPS-12-220/240:

	<i>Terminal</i>
Black (hot)	1
White (hot)	2
Green (earth ground)	3

5. Install the 14 gauge green ground strap spade lug side to Terminal 3 (green, earth ground) of the MPS-12-220/240. Secure the ring lug side of the ground strap to the nearest available stud in the enclosure. The stud size may vary depending on the actual system modules and enclosure used. Because the stud may be either a #10 thread or ¼" thread, nuts for both have been provided. The ground strap provided is long enough for all applications and the ring lug is good for both #10 and ¼" studs. If possible, install the ring lug under one of the lockwashers and nuts which secure the MPS-12-220/240 itself.
6. **When used with a PSR-1:**
Connect the 8-wire cable coming from the MPS-12-220/240 to the PSR-1 at P10.
When used with an MMB-1 or SMB-1:
Connect the CIA-12 Cable Adapter, P/N 500-692825, to the 8-wire cable coming from the MPS-12-220/240, and then to the MMB-1 or SMB-1 at P1.
When used with an MMB-2/3 or SMB-2:
Connect the 8-wire cable coming from the MPS-12-220/240 to the MMB-2/3 or SMB-2 at P14.

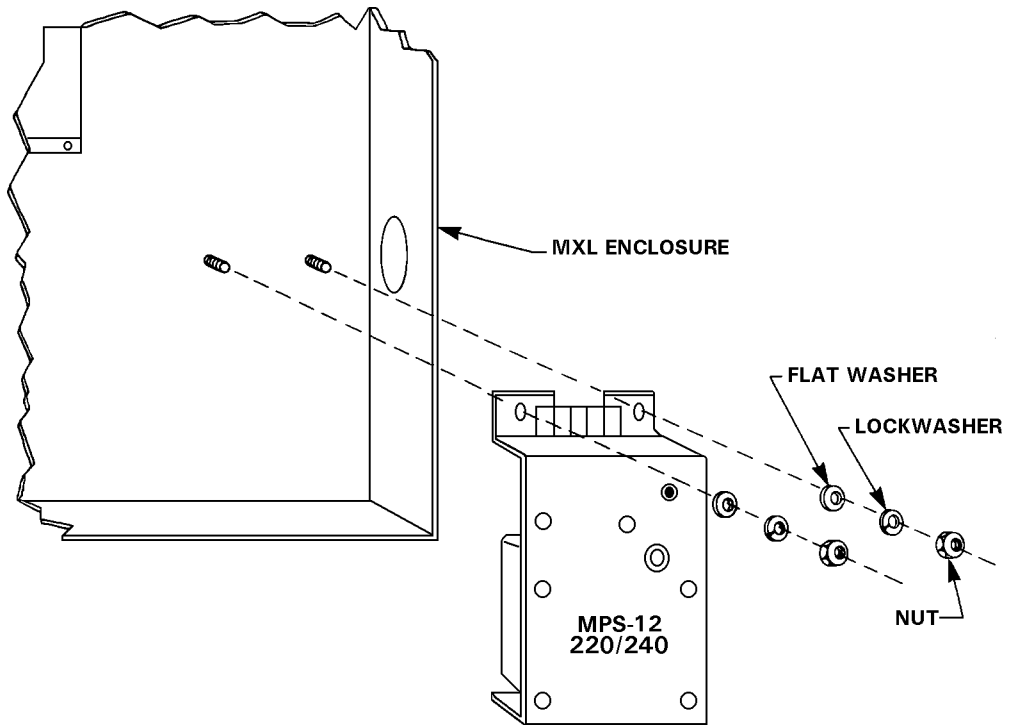


Figure 1
Mounting the MPS-12-220/240 in a Backbox

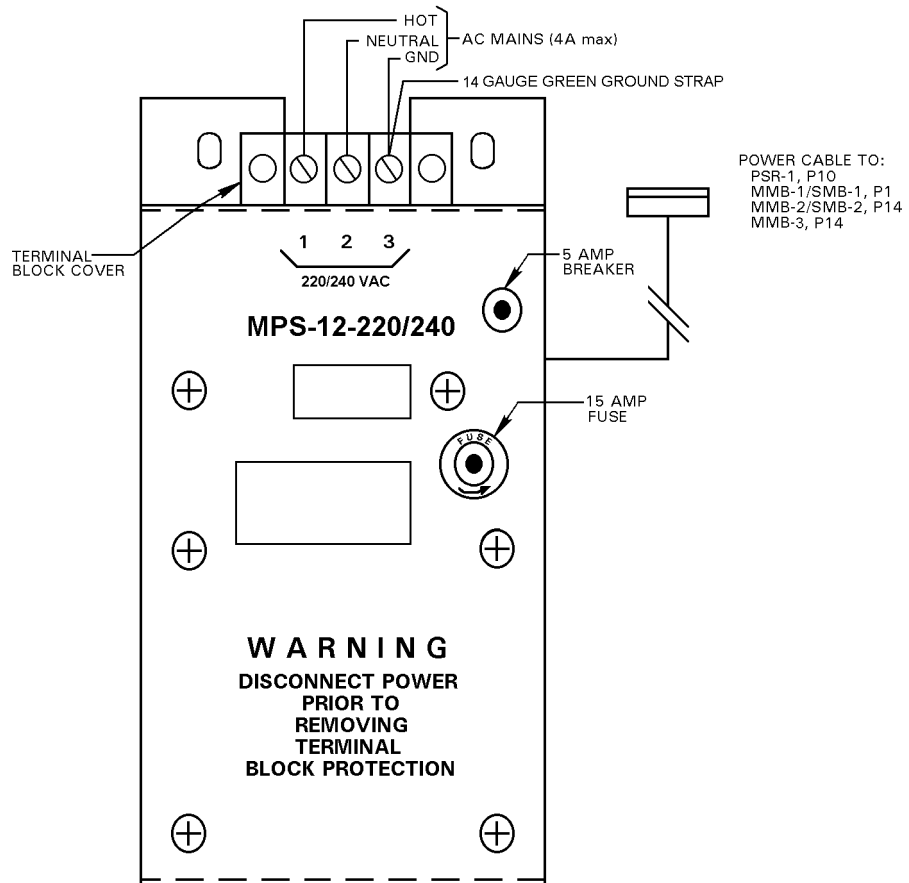


Figure 2
Front of MPS-12-220/240