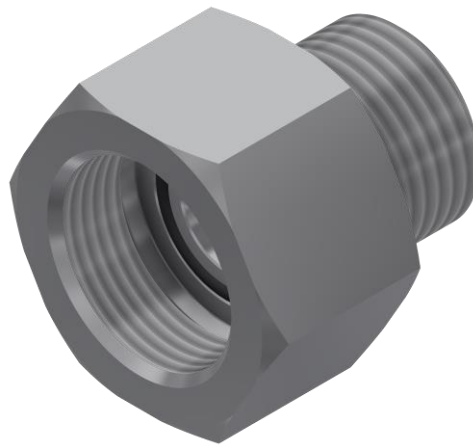


Sinorix™

FIT-MA

IG-01, IG-55, IG-100, IG-541, CO2



Adapter fitting

- For mounting a Rotarex pressure regulator or a discharge hose on a F230-type cylinder valve
- For migration of Sinorix CDT-R or Sinorix CO2 / Ar / N2 systems to Sinorix NXN systems

Product code: S54476-B790-A16

Use

This product must only be used with Sinorix™ fixed automatic extinguishing systems.

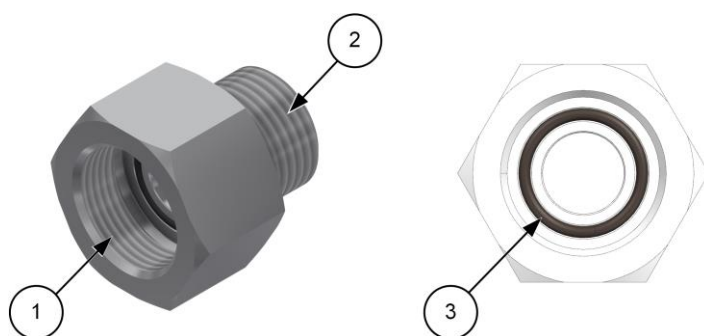
Functions

The FIT-MA adapter fitting is used as part of the migration process from a Sinorix CDT-R or Sinorix CO₂ / Ar / N₂ system to a Sinorix NXN system. It allows to use NXN cylinders in a legacy system during the first stage of the migration process.

It is mounted as follows:

- In a Sinorix CDT-R system: between the pressure regulator and the cylinder valve,
- In a Sinorix CO₂ / Ar / N₂ system: between the discharge hose and the cylinder valve.

Type summary



Item	Description	Item	Description
1	M24x1.5 internal thread for mounting on a F230-type cylinder valve	3	O-ring
2	W21,8 x 1/14" external thread for mounting on a Rotarex pressure regulator or a discharge hose	-	-

Notes

Safety

This product may only be installed by Siemens-authorized specialized installers, with experience in the design, installation and maintenance of automatic extinguishing systems. During installation, it must be ensured that:

- this product is installed in compliance with the accident prevention regulations and national regulations in force,
- this product is used as intended,
- any danger is avoided,
- Siemens requirements are met (assembly instructions, technical instructions, commissioning, and operating instructions),
- the operators have received and understood the information related to this product.

At commissioning, ensure compliance with the legislation in force, technical regulations and safety instructions.

Failure to comply with Siemens' instructions may result in serious bodily injury or significant property damage, for which Siemens cannot be held liable.

Siemens reserves the right to make technical modifications and/or improvements at any time.

Mounting

WARNING



No changes permitted

No product modifications permitted.

Pre-mounting:

- Check that the fitting and the O-ring are in good condition.
- Never use a faulty fitting.

Mounting the fitting

1. Screw the FIT-MA fitting onto the cylinder valve outlet using a 32 mm open-end wrench.
Tightening torque: 50 Nm
2. Screw the pressure regulator or the discharge hose on the FIT-MA fitting using a 32 mm open-end wrench.
Tightening torque: 50 Nm

Maintenance

Storage

- Store in its original packaging, protected from shocks.
- Store in a clean and dry location, protected from bad weather.

Inspection

- Check that the product is in good condition.
- Check that the O-ring is in good condition. Replace it if necessary.



The product must be inspected as often as required by applicable local regulations. For more information, refer to the maintenance documentation.

Technical data

Technical data	
Nominal diameter	DN12
Maximum operating pressure	360 bar
External thread	W21.8 x 1/14"
Internal thread	M24 x 1.5
Gas	IG-01, IG-55, IG-100, IG-541, CO2
Materials	Fitting: Stainless steel O-ring: Synthetic rubber
Operating temperature	-20 °C to +50 °C, non-condensing
Weight	0.123 kg

Dimensions

Dimensions in mm

